



IMPORTANT: The instruction manual you are holding includes essential information on the safety measures to be implemented for installation and start-up. Therefore, the installer as well as the user must read the instructions before beginning installation and start-up. Keep this manual for future reference.

To achieve optimum performance of the LumiPlus Mini light for LED's, follow the instructions provided below:

1. VERIFY THE CONTENTS OF THE PACKING:

The following accessories are included inside the box:

Concrete MINI LED

MINI LED
D63 adapter
Manual

Liner MINI LED

MINI LED
Manual

Preburial NICHE

NICHE

2. GENERAL CHARACTERISTICS:

This floodlamp is a Class III electric apparatus with very low safety voltage.

The floodlamp complies with IPX8 degree of protection (resistance to penetration of dust, solid bodies and humidity) at a nominal immersion depth of 2 m.

This floodlamp complies with international safety standards for lights, especially the EN 60598-2-18 standard: LIGHTS PART 2: SPECIFIC REQUIREMENTS SECTION 18 LIGHTS FOR SWIMMING POOLS AND SIMILAR APPLICATIONS.

The manufacturer is not responsible in any circumstances for assembly, installation or start-up of any electric components which have been inserted or handled at locations other than its own premises.

3. INSTALLATION:

- In order to clearly light a pool it is recommended to install a floodlamp every 5 m² of water surface. In swimming pools which are especially deep, a floodlamp is required for every 10 m³ of water volume.
- In order to prevent glare, the floodlamps should be installed so that they face away from the residence or usual view of the swimming pool.
- In the event that lighting is used in training or competition pools, the floodlamps should be installed on the sides to prevent glare on the swimmers.
- To avoid the need to empty the pool to change the lamp, we recommend that the floodlamp be installed in areas which are accessible from the upper edge of the pool.
- Sealing all sections with resin systems or safety connections that comply with the IP68 rating is recommended to ensure that both cables and cable sheaths are properly sealed. Failure to follow these steps may cause short- or long-term damage to the light and installation cables.

4. ASSEMBLY:

Quick coupling Mini light

This light is manufactured for installation in guiding tube.

1. Install the D63 adapter(or wall conduit) in the concrete wall, at a distance of 400-700 mm below the water level (Fig. 1).
2. The D63 adapter(or wall conduit) must be extended with a cable conduit the length of which remains above the maximum level of the swimming pool or spa (Fig. 5).

Feed the light cable through the conduit (Fig. 6). Leave enough length of cable in order to be able to remove the floodlamp to the border of the swimming pool (Fig. 2).

Then fit the light itself, pushing it into place (Fig. 7).

Mini light for liner pool

This light is manufactured for installation in metal or polyester bath-tubs. It does not require a niche or guiding tube for its installation.

The light should be installed at approximately 400 mm below the water-level of the SPAS and in a place where it cannot easily be covered by the body of a person. Install it preferably in the wall of the steps at the entrance of the SPAS (Fig.1).

With the use of a drill make a round hole a diameter of 48 mm in the wall of SPAS (Fig. 3).

Place the rubber gasket and the light inside the SPAS. Check that there is not dirt in the part of the projector that is with it in touch.

Place the nut of 2" on the back-part of the body of the SAPS. Fixing the nut to the body of the light (Fig. 4).

Take the precaution of leaving 1.5 m of cable wound on the body of the floodlamp in order to be able to remove the floodlamp to the edge of the pool in the event that handling is required (Fig. 2).

5. MAINTENANCE:

This projector does not require any type of maintenance. If the projector is not working properly, please contact our customer attention department.

THIS PRODUCT DOES NOT CONTAIN ANY ELEMENTS THAT CAN BE HANDLED, DISMANTLED OR REPLACED BY THE USER. IT IS FORBIDDEN TO ACCESS INSIDE THE PRODUCT, OTHERWISE THE GUARANTEE OF THE PRODUCT WILL BECOME INVALID.

6. SAFETY WARNINGS:

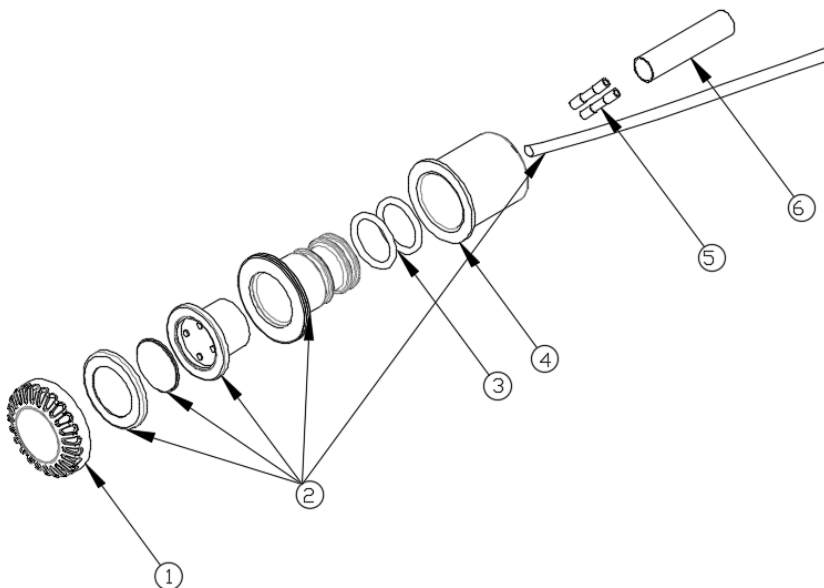
- People in charge of assembly should be suitably qualified for this type of work.
- Avoid making contact with the electric voltage.
- Comply with the current standards regarding accident prevention.
- In this regard, the IEC 364-7-702 standards must be observed: **WIRING IN BUILDINGS SPECIAL WIRING SWIMMING POOLS**
- All maintenance operations should be performed with the projector disconnected from the Mains.

7. ASSEMBLY AND FUNCTIONING WARNINGS:

- It is not recommended the use of sealing putty in this product and, anyway, you should use only products specifically conceived to work with ABS, all those products of universal use remain excluded.
- The projector is designed **TO OPERATE ONLY WITH A SAFETY TRANSFORMER**.
- The manufacturer is not responsible in any circumstances for assembly, installation or start-up of any electric components which have been inserted or handled at locations other than its own premises.
- It is responsibility of the installer to ensure that no water gets inside the projector by means of the cables.
- This projector is not designed to work submerged in seawater.
- This projector is resistant to pool treatments described below, always that the concentration values do not exceed the following levels:

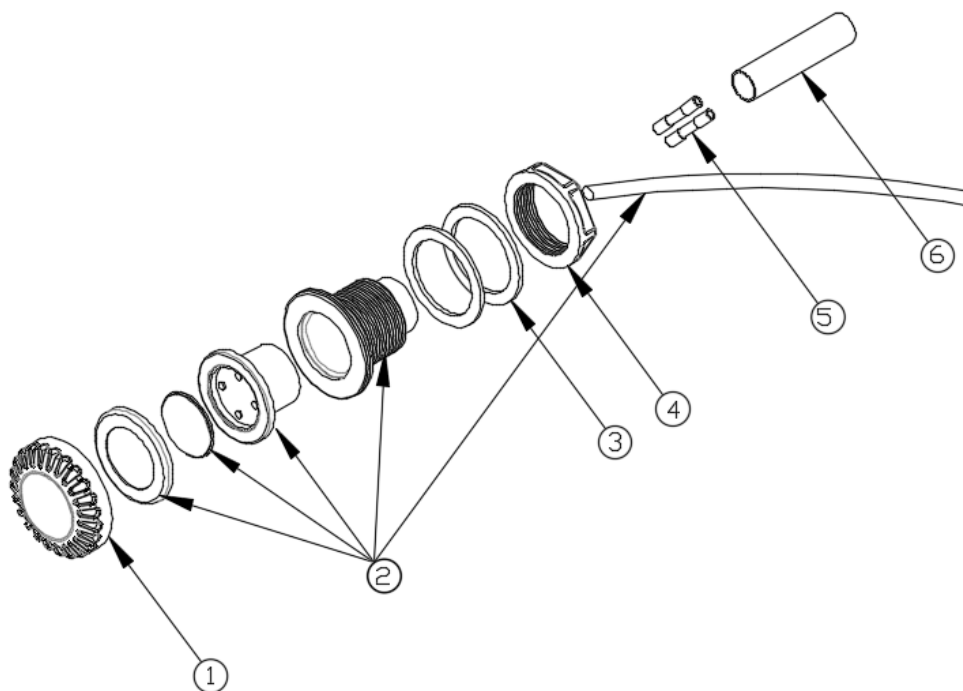
TYPE OF TREATMENT	CONCENTRATION IN WATER
Chlorine	2 g/l
Bromine	5 g/l
Salt electrolysis (Na Cl)	6 g/l

Attention : Please note that the Ph of pool water always must be between 7.2 and 7.6.



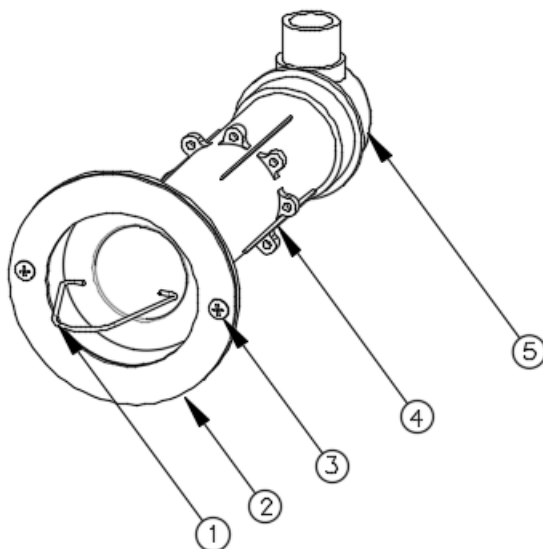
MINI LED Concrete

ID.	CODE	DESCRIPTION	Q.
1	08020823-0001	Big PC cover	1
2	08020802-0001	LED warm white	1
2	08020801-0003	LED cold white	1
2	08020803-0005	LED RGB	1
3	08020823-0006	O-ring	2
4	08020823-0007	D63 adapter	1
5	08020605N-0002	Terminals	2
6	08020605N-0001	Heat shrinkable tube	1



MINI LED Liner

ID.	CODE	DESCRIPTION	Q.
1	08020823-0001	Big PC cover	1
2	08020812-0001	LED warm white	1
2	08020811-0001	LED cold white	1
2	08020813-0004	LED RGB	1
3	08020813-0002	Flat gasket	2
4	08020813-0003	Nut	1
5	08020605N-0002	Terminals	2
6	08020605N-0001	Heat shrinkable tube	1



NICHE WITH FACEPLATE

ID.	CODE	DESCRIPTION	Q.
1	08020801F-0001	Hook	1
2	08020801F-0002	Stainless steel faceplate	1
3	08020801F-0003	Screw	2
4	08020801F-0004	Niche	1
5	08020801N-0002	End cap	1



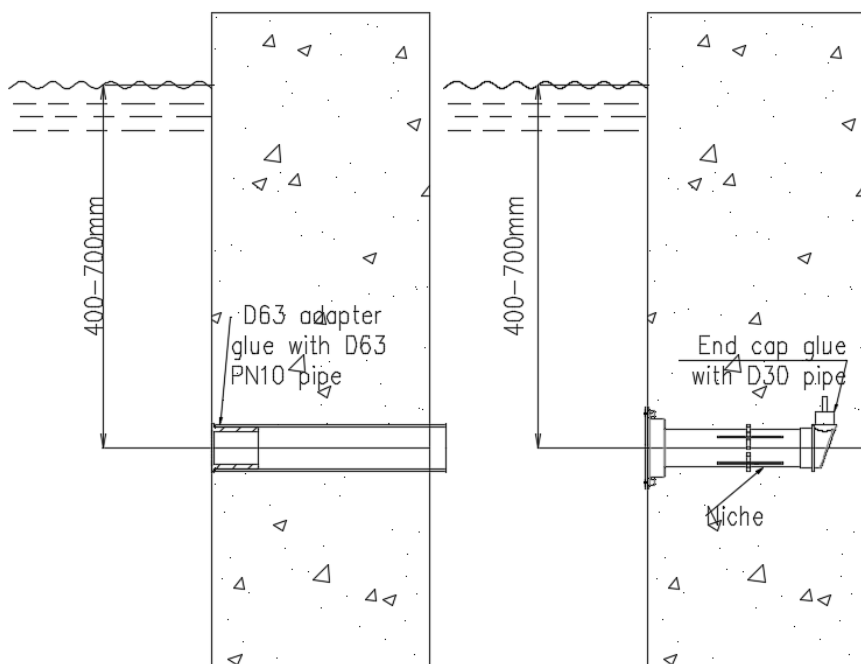


Fig. 1

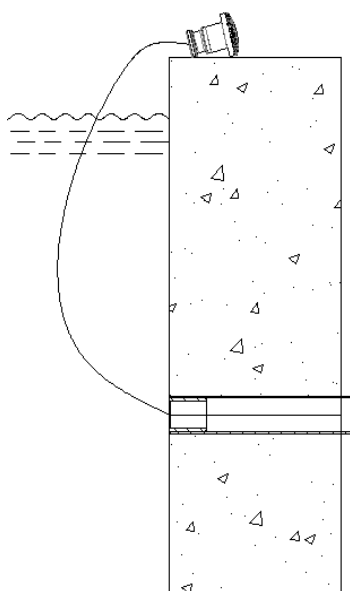


Fig. 2

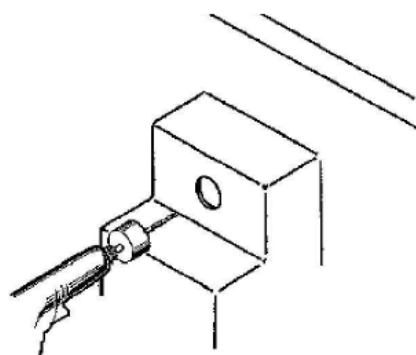


Fig. 3

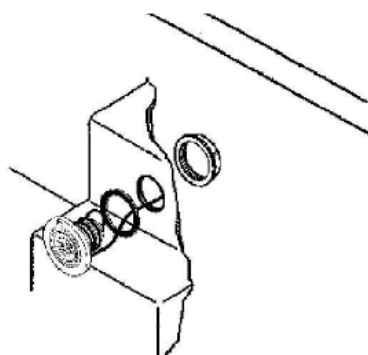


Fig. 4

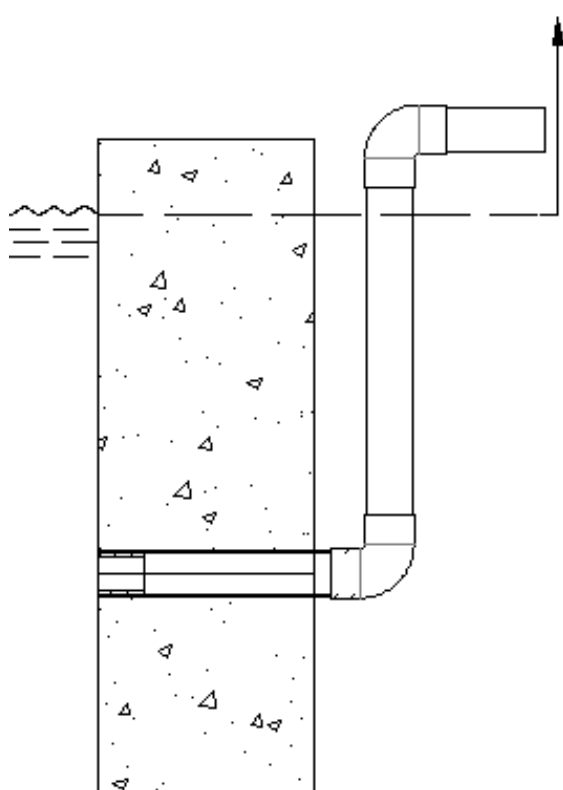


Fig. 5

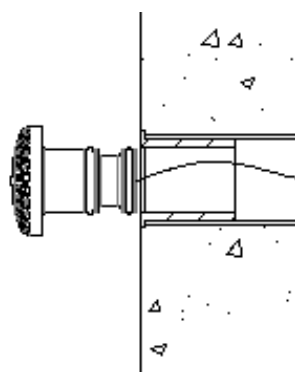


Fig. 6

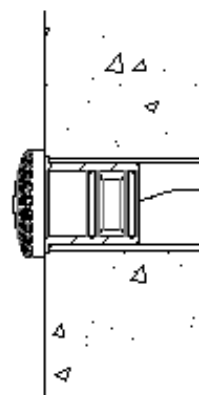


Fig. 7

□ TECHNICAL CHARACTERISTICS

DESCRIPTION	STANDARD
Rated voltage	12V
Current suply	AC
Power	LED 12V AC 10 W
	LED 12V AC 6 W
Protection	CLASE III IPX8
TO BE USED ONLY WITH A SECURIY TRANSFORMER	
THE UNDERWATER LIGHT NEVER TO BE SWITCHED ON IF IT IS NOT SUBMERGED	

□ We reserve to change all or part of the articles or contents of this document, without prior notice.