

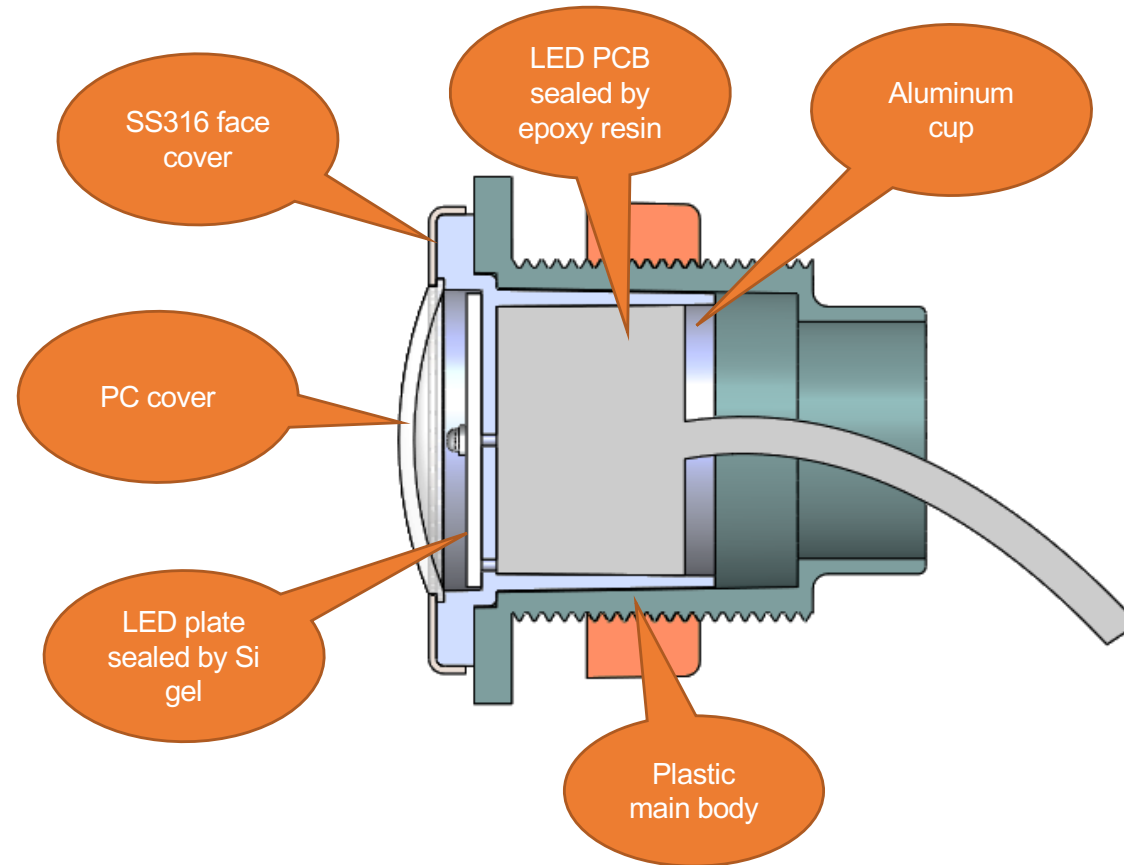
NINGBO LINYA SWIMMING POOL AND
WATER TREATMENT EQUIPMENT CO. LTD.
PRODUCT: “LEDXS MINI LIGHT”

AUGUST 2019

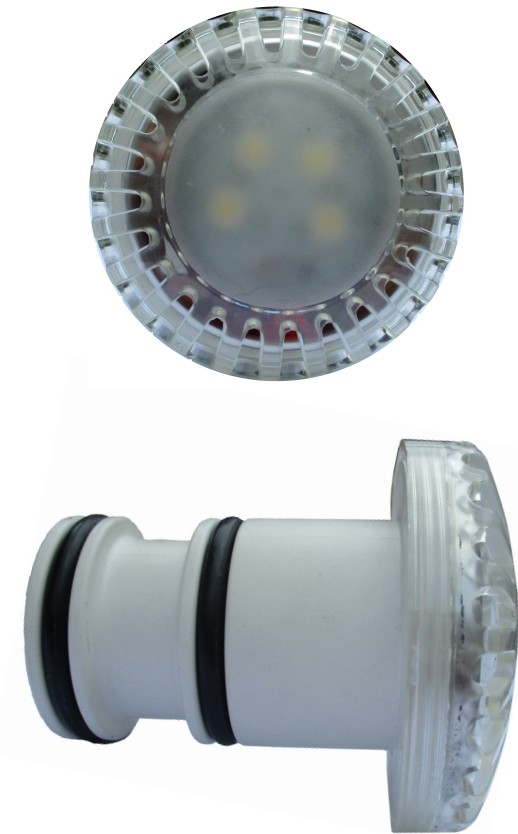
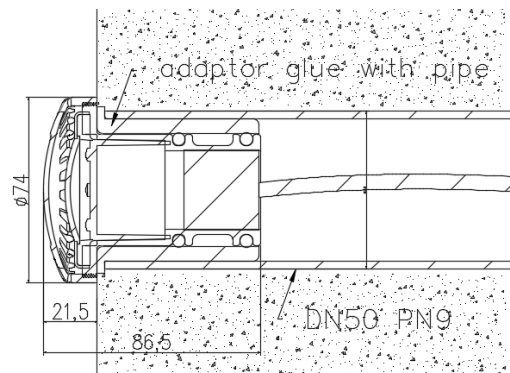
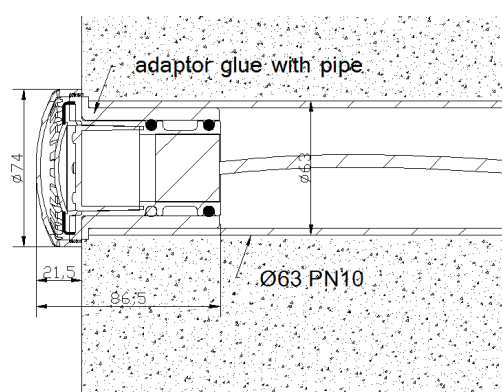
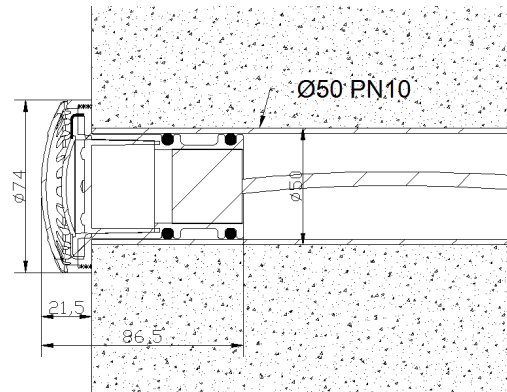
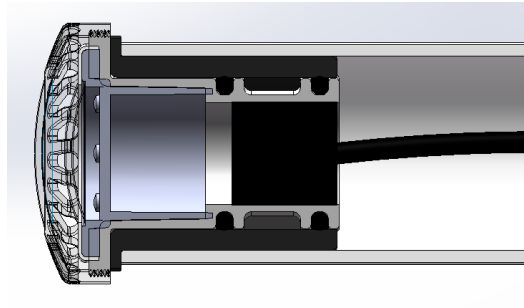
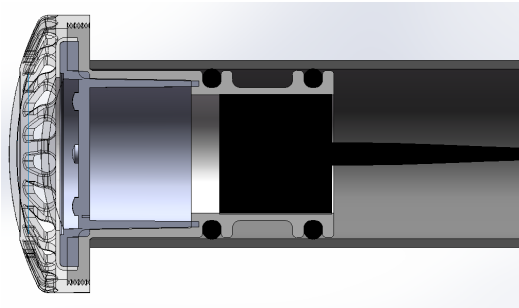
Compact mini led light for pool & spa.

- Rapid installation in ø50 (PN10) & 63mm PN-6/10 pipe & DN50 PN9
- Max working temperature is 45 degrees C, making it suitable to work in hot SPA or similar environments.
- White & RGB are available, RGB light has auto and fixed color.
- RGB lumen is 320lm, much higher than traditional RGB 186lm.
- The lamp is completely sealed, no risk to have water leakage.
- Very compact design, no need to replace LED bulb separately.
- Thermal protector is integrated inside ensuring the proper operation.
- Dual water proof seal kit is included.
- CE Certified.

Bulb

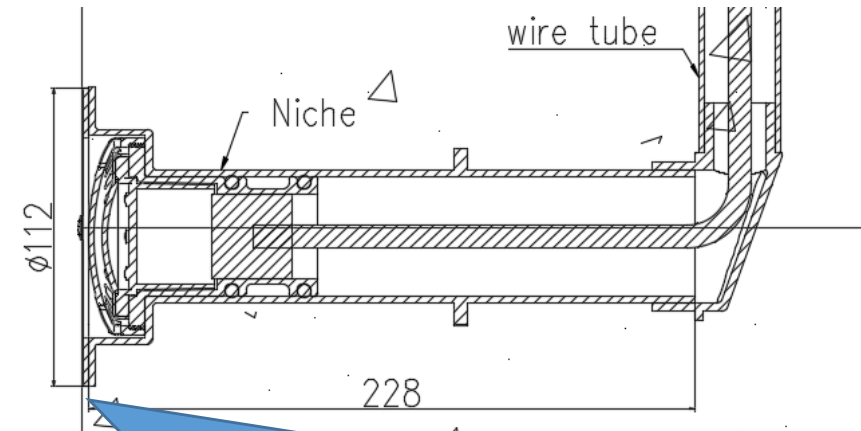
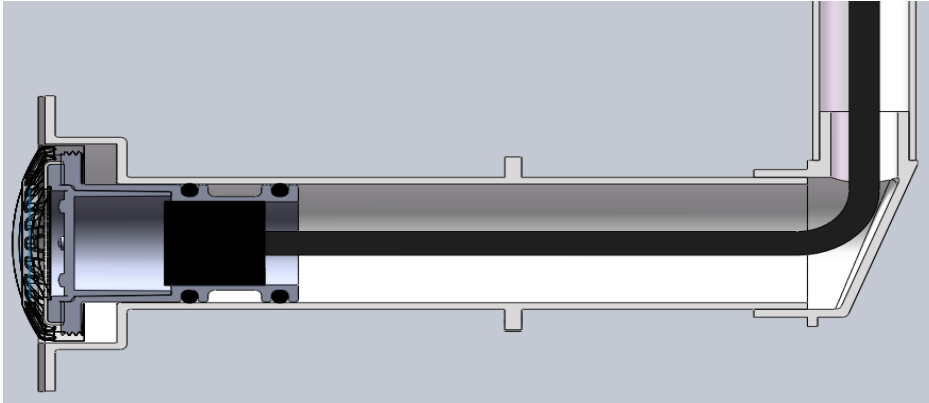


Concrete pools – installed inside a pipe.



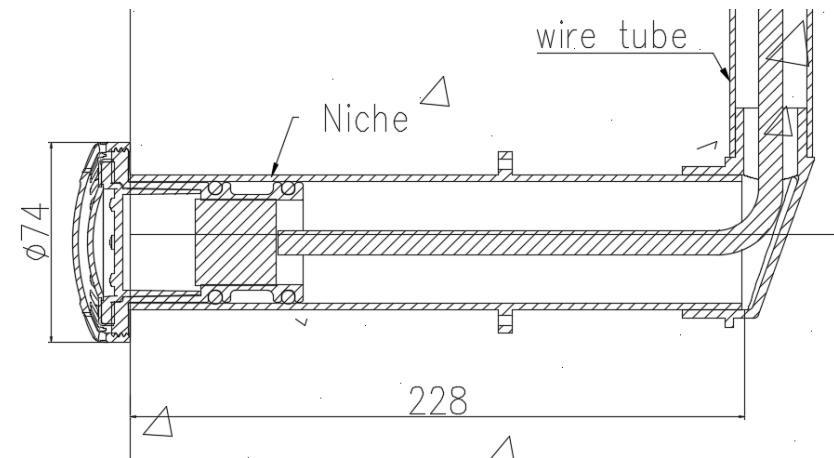
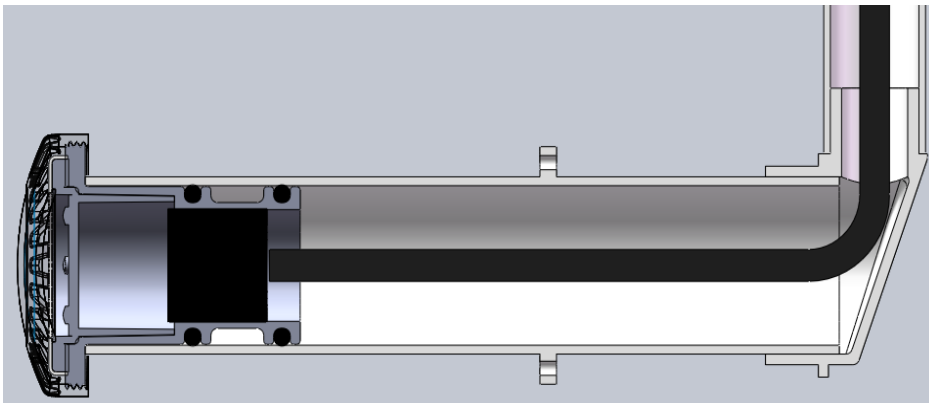
Concrete pools – with niche

Niche with SS316 Faceplate

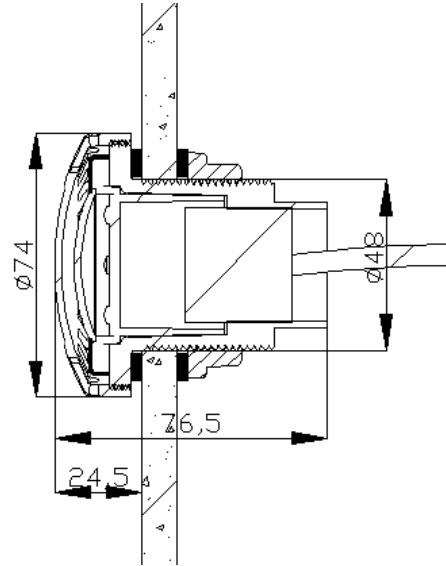
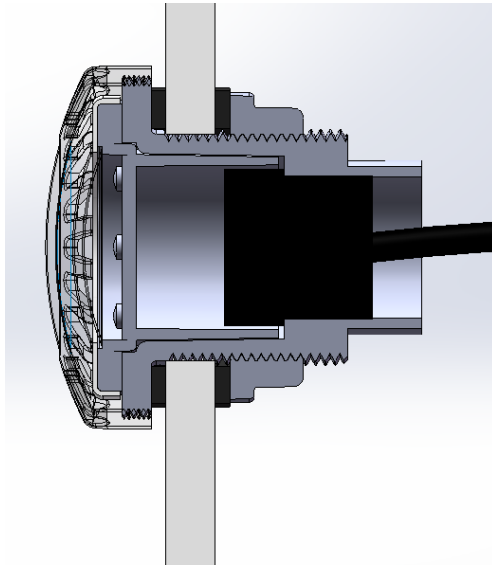


2mm offset between the wall of the swimming pool and the face plate of the niche.

Niche without Faceplate



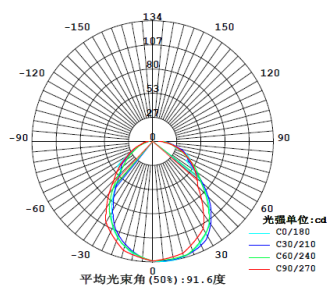
Liner pools



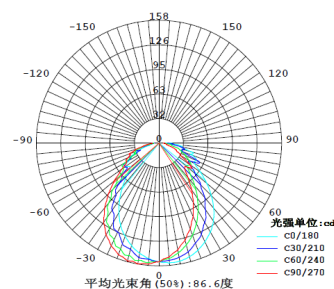
Specifications & Codes

	Lumen	Power	Voltage
RGB	320	6W	12V AC
Cold white	360	6W	12V AC
Warm white	360	6W	12V AC

ISOFLUX DIAGRAM



WHITE



RGB

CODE	DESCRIPTION
08020801	Cool White with adapter to DN50 PN9 pipe - Australia Std
08020802	Warm White with adapter to DN50 PN9 pipe - Australia Std
08020803	RGB AUS with adapter to DN50 PN9 pipe - Australia Std
08020811	Cool White for Liner pools
08020812	Warm White for Liner pools
08020813	RGB for Liners pools
08020821	Cool White with adapter to d63 PN10 pipe
08020822	Warm White with adapter to d63 PN10 pipe
08020823	RGB with adapter to d63 PN10 pipe
08020801-0001	Niche for concrete
08020801-0002	Niche for concrete with Stainless Steel faceplate