

FLAT UNDERWATER LIGHT STANDARD SERIES



IMPORTANT: The instruction manual you are holding includes essential information on the safety measures to be implemented for installation and start-up. Therefore, the installer as well as the user must read the instructions before beginning installation and start-up.
Keep this manual for future reference.

To achieve optimum performance of the Standard Floodlamp follow the instructions provided below:

1. VERIFY THE CONTENTS OF THE PACKING:

The following accessories are included inside the box:

<u>Concrete pool floodlamp</u>	<u>Prefabricated pool floodlamp</u>
Floodlamp unit	Floodlamp unit
Crosshead mount	Crosshead mount
Bag of screws	Bag of screws

2. GENERAL CHARACTERISTICS:

This floodlamp has been designed to be used fully submerged underwater in fresh water swimming pools. It is a Class III electric apparatus with very low safety voltage (12V with alternating current).

The floodlamp complies with IPX8 degree of protection (resistance to penetration of dust, solid bodies and humidity) at a nominal immersion depth of 2 m.

This floodlamp complies with international safety standards for lights, especially the EN 60598-2-18 standard. LIGHTS PART 2: SPECIFIC REQUIREMENTS SECTION 18 LIGHTS FOR SWIMMING POOLS AND SIMILAR APPLICATIONS.

The manufacturer is not responsible in any circumstances for assembly, installation or start-up of any electric components which have been inserted or handled at locations other than its own premises.

3. INSTALLATION:

- Never install in vertical position with the lamp facing downwards.
- In order to clearly light a pool it is recommended to install a LED floodlamp every 15 or 20 m² of water surface. In swimming pools which are especially deep, a LED floodlamp is required for every 15 or 20 m³ of water volume.
- In order to prevent glare, the floodlamps should be installed so that they face away from the residence or usual view of the swimming pool.
- In the event that lighting is used in training or competition pools, the floodlamps should be installed on the sides to prevent glare on the swimmers.
- To avoid the need to empty the pool to change the lamp, we recommend that the floodlamp be installed in areas which are accessible from the upper edge of the pool.

Prior to installation verify that the gland seal has been fully tightened.

The floodlamp should be placed on the wall of the pool at approximately 700 mm from the water surface (Fig.1).

The method of fastening the housing to the pool wall varies depending on whether it is a floodlamp for concrete pools or prefabricated pools.

Concrete swimming pool

Place the crosshead mount of the flat floodlamp in the designated place. Mark the holes. Drill with a Ø8 bit and insert the 4 fastening blocks.

Position the crosshead mount so that the word "TOP" is located on the upper part.

Use four 4.8x25 screws to secure the crosshead mount to the wall (Fig 2).

Place the conduit body in the upper left quadrant of the crosshead mount, in accordance with the measurements shown in Fig 3.

Prefabricated swimming pool

Place the crosshead mount of the flat floodlamp in the designated place. Mark the holes. Drill with a Ø8 bit.

Position the crosshead mount so that the word "TOP" is located on the upper part.

Use four M-6x35 screws with four washers to secure the crosshead mount to the inner wall of the swimming pool. Place 4 butt joints between the mount and the liner. On the outer side of the swimming pool, insert 4 washers and 4 nuts (Fig 2).

Place the conduit body in the upper left quadrant of the crosshead mount, in accordance with the measurements shown in Fig 3. Use the butt point and the conduit nut to secure on the outer side of the swimming pool.

4. ASSEMBLY:

The floodlamp is supplied with 2.5m of cable. It should be inserted through the conduit body(Fig 4), leaving approximately 1.5m of cable in order to be able to remove the floodlamp to the border of the swimming pool if handling or lamp change is required(Fig 1).

Wind the cable in counter-clockwise direction under the screen fastening clamps(Fig 5). Firmly secure the gland seal nut (Fig 6).

In order to secure the floodlamp to the crosshead mount, ensure that the word "TOP" is located on the upper part. First, insert the lower clamp of the screen in the crosshead mount.

Then, screw the upper part until the floodlamp is firmly inserted in the crosshead mount(Fig7-8).

5. MAINTENANCE:

To remove the floodlamp to the edge of the swimming pool (Fig. 1) Insert a screwdriver through the upper hole of the ornament and unscrew the spline of the mount until the floodlamp is released.(Fig 7-8).

Pull up on the floodlamp until it is released from the lower groove and can be removed from the swimming pool.

Unscrew all the 8 screws, Open the floodlamp (Fig 5).

Pull on the lamp to separate it from the lamp holder. Connect the new LED plate.

VERY IMPORTANT: To change the lamp, always use the cardboard protector and never touch the new lamp with your bare hands.

Then, assemble the floodlamp in the opposite order of that described. Make sure that the butt joint and the transparent lens are inserted properly in the screen seat.

Align the word "TOP" on the ornament with the word "TOP" on the screen fastening.

Turn the ornament slightly to the right until it is fitted with the screen.

Wind 1..5m of cable in counter-clockwise direction under the screen fastening clamps. (Fig 5)

Attention:

- Before any handling ensure that there is NO voltage supplied to the floodlamp.
- The new lamp should have the same characteristics as that supplied with the floodlamp, (LED lamp).
- In order to ensure full watertightness, clean the seat of the floodlamp lens joint or replace this if any permanent deformation or notches are visible.

6. START-UP:

Ensure that the voltage the lamp receives is never greater than 12 V.

The floodlamp should only operate underwater while secured to the vertical walls of the pool. Never switch on the floodlamp if it is not underwater.

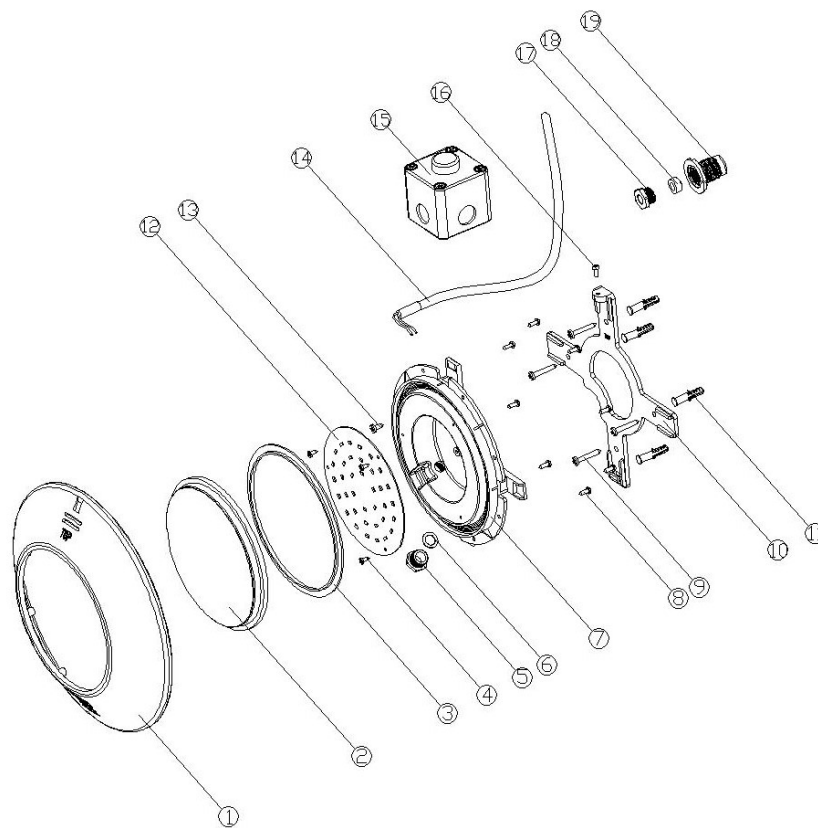
7. COLOR LED CONTROL:

To change the color mode just turn the light switch OFF then ON within 1.5 seconds on each color mode until you select the required color mode. If you require to select a new color after the light mode is set just switch off the light switch for 2 seconds and the lamp will reset to mode 1.

	Mode 1	Mode 2	Mode 3	Mode 4	Mode 5	Mode 6	Mode 7	Mode 8
Color	Auto change	white	Blue	Green	Red	Amber	Purple	Disco

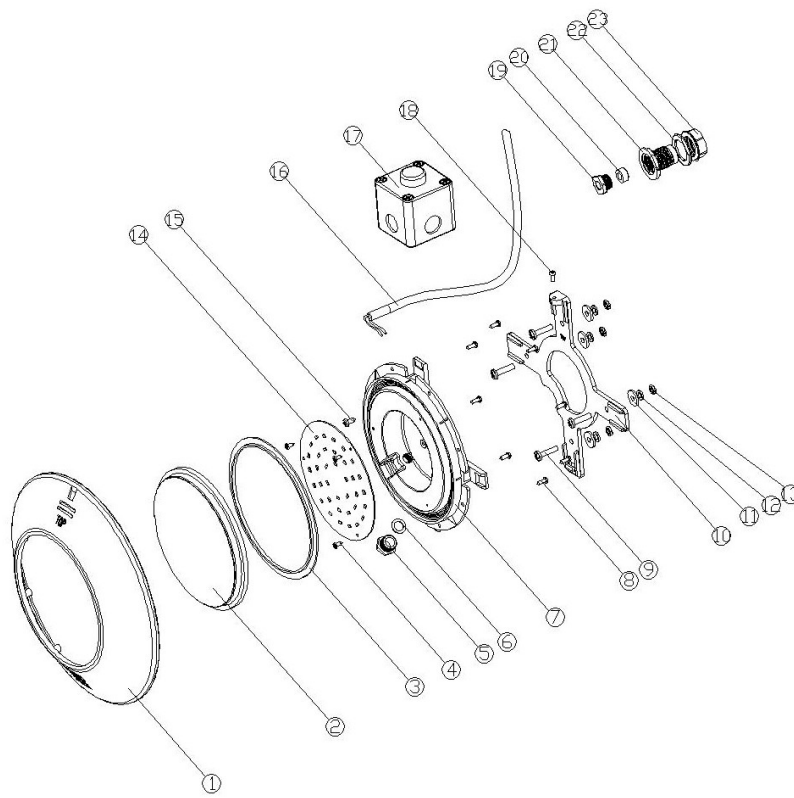
8. SAFETY WARNINGS:

- The persons who are in charge of assembly should have the required qualifications for this type of work.
 - If the end cable of this light fitting is damaged, it should only be replaced by the manufacturer, its technical service or by a similarly qualified person, to avoid any danger.
 - Avoid making contact with the electric voltage.
 - Comply with the current standards regarding accident prevention.
 - In this regard, the IEC 364-7-702 standards must be observed. **WIRING IN BUILDINGS.**
- SPECIAL WIRING. SWIMMING POOLS.**
- Any operation related to the maintenance or replacement of parts should be performed with the floodlamp disconnected from the electric power system.
 - Do not handle with wet feet.
 - The manufacturer is not responsible in any circumstances for assembly, installation or start-up of any electric components which have been inserted or handled at locations other than its own premises.



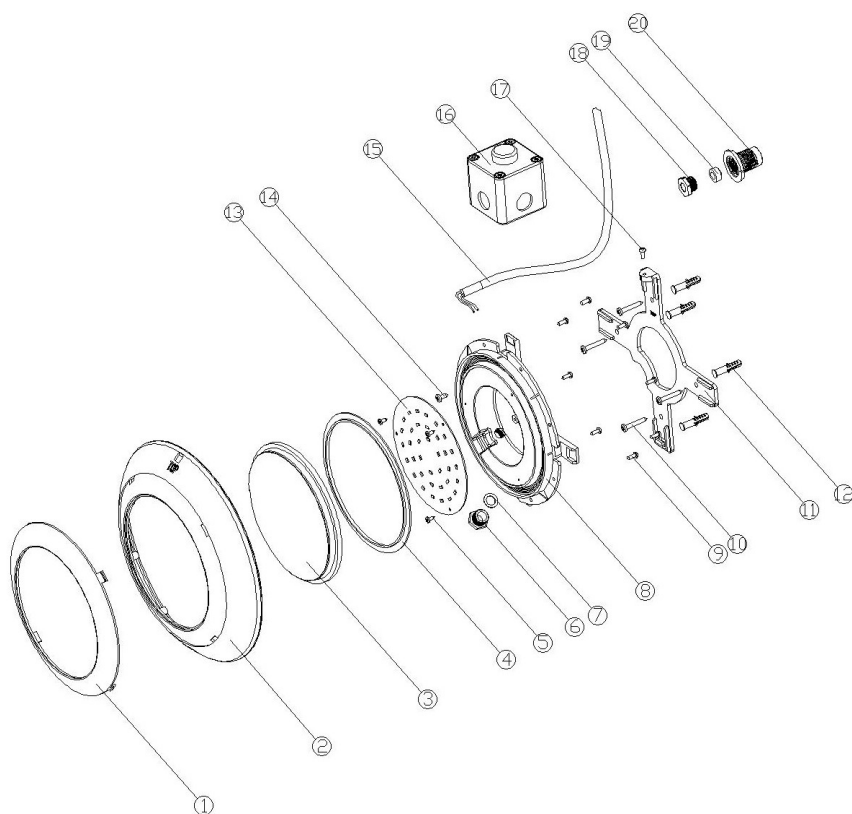
ENGLISH LED Concrete Flat UWL Stingray

ID.	DESCRIPTION	Q.	ID.	DESCRIPTION	Q.
1	Face plate ring	1	13	GB845 ST3.9*6	1
2	Clear lens	1	14	Electrical cable 2.5mx1mm	1
3	Silicon gasket	1	15	Button (Optional for color led)	1
4	Screw DIN 7981 2.9x9.5	3	16	Screw M4x12	1
5	Cable grand nut	1	17	Cable grand nut	1
6	Plastic ring	1	18	Cable grand gasket	1
7	Rear protection cover	1	19	Conduit connector	1
8	GB845F ST3.9*10	8			
9	Screw DIN 7981 A2 ST4.8x38	4			
10	Mounting bracket	1			
11	Screw anchor S-6	4			
12	White led 20W	1			
12	White led 10W	1			
12	Color led 20W	1			
12	Color led 10W	1			



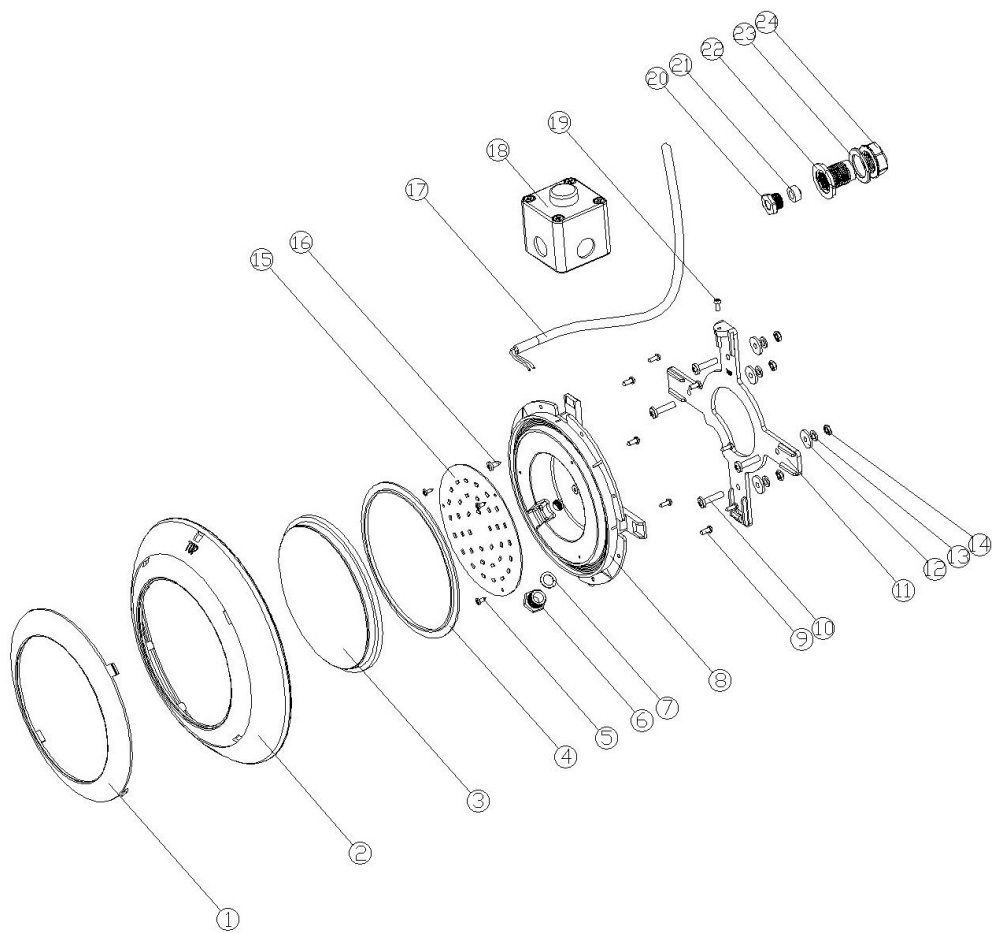
ENGLISH LED Prefabricated Flat UWL Stingray

ID.	DESCRIPTION	Q.	ID.	DESCRIPTION	Q.
1	Face plate ring	1	14	White led 20W	1
2	Clear lens	1	14	White led 10W	1
3	Silicon gasket	1	14	Color led 20W	1
4	Screw DIN 7981 2.9x9.5	3	14	Color led 10W	1
5	Cable grand nut	1	15	GB845 ST3.9*6	1
6	Plastic ring	1	16	Electrical cable 2.5mx1mm	1
7	Rear protection cover	1	17	Button (Optional for color led)	1
8	GB845F ST3.9*10	8	18	Screw M4x12	1
9	Screw DIN 7985 M6x25	4	19	Cable gland nut	1
10	Mounting bracket	1	20	Cable gland gasket	1
11	Washer DIN125 A6.4	4	21	Conduit connector	1
12	Gasket rubber	4	22	Flat gasket	1
13	Nut DIN934 M6	4	23	Wall conduit nut	1



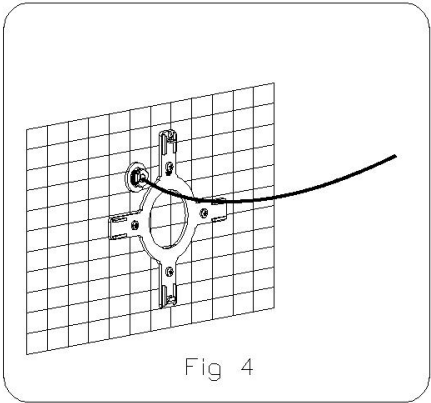
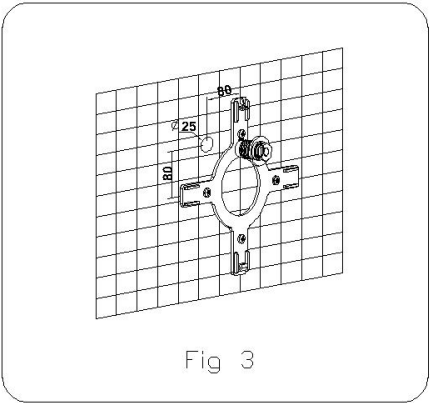
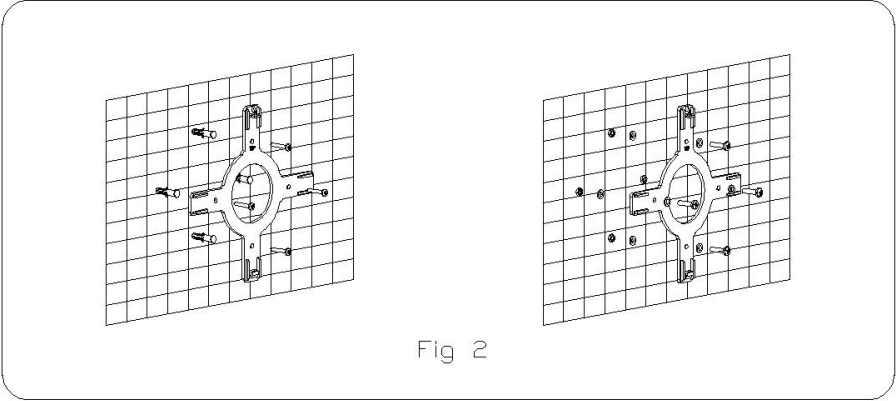
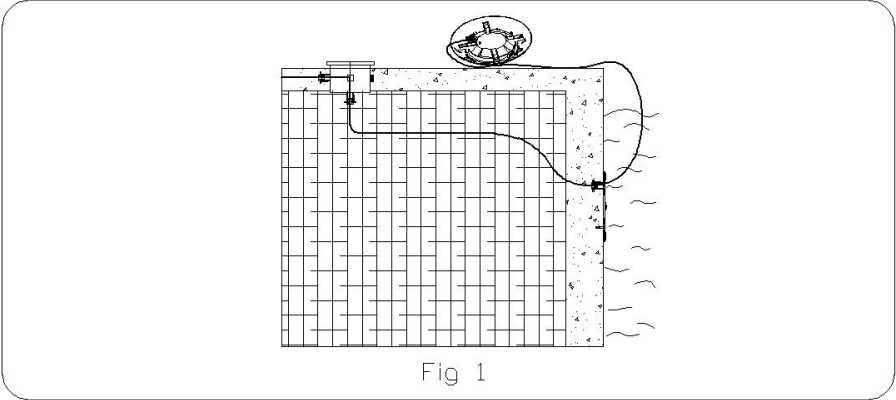
ENGLISH LED Concrete Flat UWL Turtle

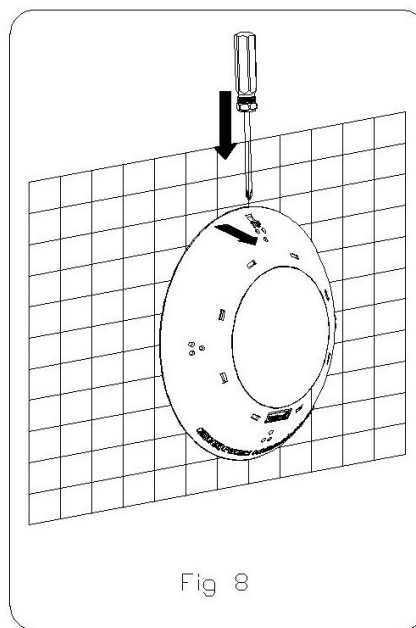
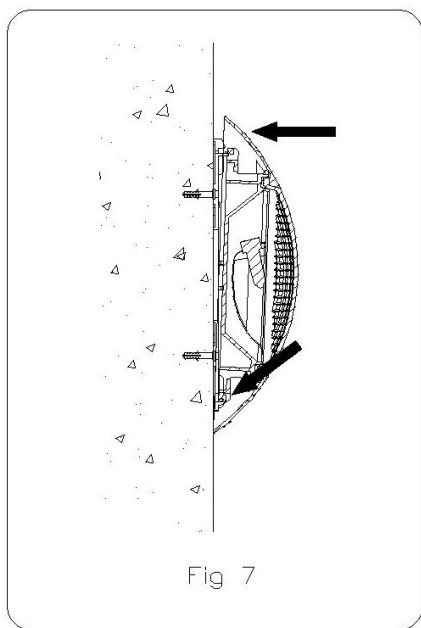
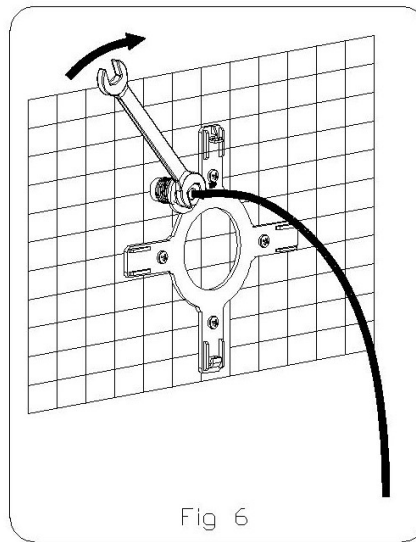
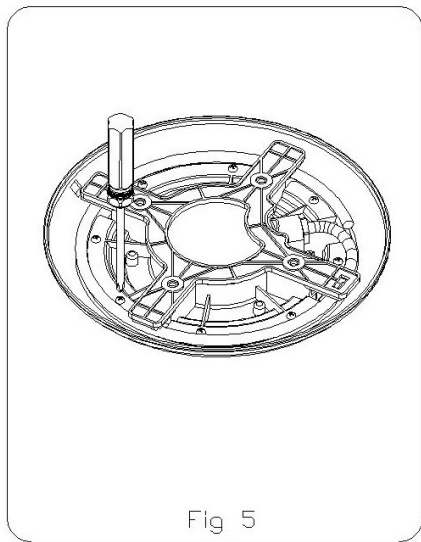
ID.	DESCRIPTION	Q.	ID.	DESCRIPTION	Q.
1	Plastic face plate cover	1	13	White led 20W	1
1	Stainless steel face plate cover(optional)	1	13	White led 10W	1
2	Face plate ring	1	13	Color led 20W	1
3	Clear lens	1	13	Color led 10W	1
4	Silicon gasket	1	14	GB845 ST3.9*6	1
5	Screw DIN 7981 2.9x9.5	3	15	Electrical cable 2.5mx1mm	1
6	Cable grand nut	1	16	Button (Optional for color led)	1
7	Plastic ring	1	17	Screw M4x12	1
8	Rear protection cover	1	18	Cable grand nut	1
9	GB845F ST3.9*10	8	19	Cable grand gasket	1
10	Screw DIN 7981 A2 ST4.8x38	4	20	Conduit connector	1
11	Mounting bracket	1			
12	Screw anchor S-6	4			




ENGLISH LED Prefabricated Flat UWL Turtle

ID.	DESCRIPTION	Q.	ID.	DESCRIPTION	Q.
1	Plastic face plate cover	1	15	White led 20W	1
1	Stainless steel face plate cover(optional)Clear	1	15	White led 10W	1
2	Face plate ring	1	15	Color led 20W	1
3	lens	1	15	Color led 10W	1
4	Silicon gasket	1	16	GB845 ST3.9*6	1
5	Screw DIN 7981 2.9x9.5	3	17	Electrical cable 2.5mx1mm	1
6	Cable grand nut	1	18	Button (Optional for color led)	1
7	Plastic ring	1	19	Screw M4x12	1
8	Rear protection cover	1	20	Cable gland nut	1
9	GB845F ST3.9*10	8	21	Cable gland gasket	1
10	Screw DIN 7985 M6x25	4	22	Conduit connector	1
11	Mounting bracket	1	23	Flat gasket	1
12	Washer DIN125 A6.4	4	24	Wall conduit nut	1
13	Gasket rubber	4			
14	Nut DIN934 M6	4			





□ TECHNICAL CHARACTERISTICS

DESCRIPTION		STANDARD
Rated voltage		12V
Current suply		AC
Power		LED 12V AC 20 W
		LED 12V AC 10 W
Protection		CLASE III IPX8
	TO BE USED ONLY WITH A SECURIY TRANSFORMER	
THE UNDERWATER LIGHT NEVER TO BE SWITCHED ON IF IT IS NOT SUBMERGED		

MA-0083 REV0

□ We reserve to change all or part of the articles or contents of this document, without prior notice.