

FLAT UNDERWATER LIGHT STANDARD SERIES



IMPORTANT: The instruction manual you are holding includes essential information on the safety measures to be implemented for installation and start-up. Therefore, the installer as well as the user must read the instructions before beginning installation and start-up.
Keep this manual for future reference.

To achieve optimum performance of the Standard Floodlamp follow the instructions provided below:

1. VERIFY THE CONTENTS OF THE PACKING:

The following accessories are included inside the box:

<u>Concrete pool floodlamp</u>	<u>Prefabricated pool floodlamp</u>
Floodlamp unit	Floodlamp unit
Crosshead mount	Crosshead mount
Bag of screws	Bag of screws

2. GENERAL CHARACTERISTICS:

This floodlamp has been designed to be used fully submerged underwater in fresh water swimming pools. It is a Class III electric apparatus with very low safety voltage (12V with alternating current).

The floodlamp complies with IPX8 degree of protection (resistance to penetration of dust, solid bodies and humidity) at a nominal immersion depth of 2 m.

This floodlamp complies with international safety standards for lights, especially the EN 60598-2-18 standard. LIGHTS PART 2: SPECIFIC REQUIREMENTS SECTION 18 LIGHTS FOR SWIMMING POOLS AND SIMILAR APPLICATIONS.

The manufacturer is not responsible in any circumstances for assembly, installation or start-up of any electric components which have been inserted or handled at locations other than its own premises.

3. INSTALLATION:

- Never install in vertical position with the lamp facing downwards.
- In order to clearly light a pool it is recommended to install a 75W floodlamp every 10 or 15 m² of water surface. In swimming pools which are especially deep, a 75 W floodlamp is required for every 12 or 16 m³ of water volume.
- In order to prevent glare, the floodlamps should be installed so that they face away from the residence or usual view of the swimming pool.
- In the event that lighting is used in training or competition pools, the floodlamps should be installed on the sides to prevent glare on the swimmers.
- To avoid the need to empty the pool to change the lamp, we recommend that the floodlamp be installed in areas which are accessible from the upper edge of the pool.

Prior to installation verify that the gland seal has been fully tightened.

The floodlamp should be placed on the wall of the pool at approximately 700 mm from the water surface (Fig.1).

The method of fastening the housing to the pool wall varies depending on whether it is a floodlamp for concrete pools or prefabricated pools.

Concrete swimming pool

Place the crosshead mount of the flat floodlamp in the designated place. Mark the holes. Drill with a Ø8 bit and insert the 4 fastening blocks.

Position the crosshead mount so that the word "TOP" is located on the upper part.

Use four 4.8x25 screws to secure the crosshead mount to the wall (Fig 2).

Place the conduit body in the upper left quadrant of the crosshead mount, in accordance with the measurements shown in Fig 3.

Prefabricated swimming pool

Place the crosshead mount of the flat floodlamp in the designated place. Mark the holes. Drill with a Ø8 bit.

Position the crosshead mount so that the word "TOP" is located on the upper part.

Use four M-6x35 screws with four washers to secure the crosshead mount to the inner wall of the swimming pool. Place 4 butt joints between the mount and the liner. On the outer side of the swimming pool, insert 4 washers and 4 nuts (Fig 2).

Place the conduit body in the upper left quadrant of the crosshead mount, in accordance with the measurements shown in Fig 3. Use the butt point and the conduit nut to secure on the outer side of the swimming pool.

4. ASSEMBLY:

The floodlamp is supplied with 2.5m of cable. It should be inserted through the conduit body(Fig 4), leaving approximately 1.5m of cable in order to be able to remove the floodlamp to the border of the swimming pool if handling or lamp change is required(Fig 1).

Wind the cable in counter-clockwise direction under the screen fastening clamps(Fig 5). Firmly secure the gland seal nut (Fig 6).

In order to secure the floodlamp to the crosshead mount, ensure that the word "TOP" is located on the upper part. First, insert the lower clamp of the screen in the crosshead mount.

Then, press on the upper part until the floodlamp is firmly inserted in the crosshead mount.

5. MAINTENANCE:

To remove the floodlamp to the edge of the swimming pool (Fig. 1) Insert a screwdriver through the upper hole of the ornament and press on the spline of the mount until the floodlamp is released.(Fig 7-8).

Pull up on the floodlamp until it is released from the lower groove and can be removed from the swimming pool.

Unlock the screw, Dismount the floodlamp by turning the key in counter-clockwise direction(Fig 9).

Pull on the lamp to separate it from the lamp holder. Connect the new lamp(Fig 10).

VERY IMPORTANT: To change the lamp, always use the cardboard protector and never touch the new lamp with your bare hands.

Then, assemble the floodlamp in the opposite order of that described. Make sure that the butt joint and the transparent lens are inserted properly in the screen seat.

Align the word "TOP" on the ornament with the word "TOP" on the screen fastening.

Turn the ornament slightly to the right until it is fitted with the screen.

Wind 1..5m of cable in counter-clockwise direction under the screen fastening clamps. (Fig 5)

Attention:

- Before any handling ensure that there is NO voltage supplied to the floodlamp.
- The new lamp should have the same characteristics as that supplied with the floodlamp, (75W 12V halogen lamp).
- In order to ensure full watertightness, clean the seat of the floodlamp lens joint or replace this if any permanent deformation or notches are visible.

6. START-UP:

Ensure that the voltage the lamp receives is never greater than 12 V.

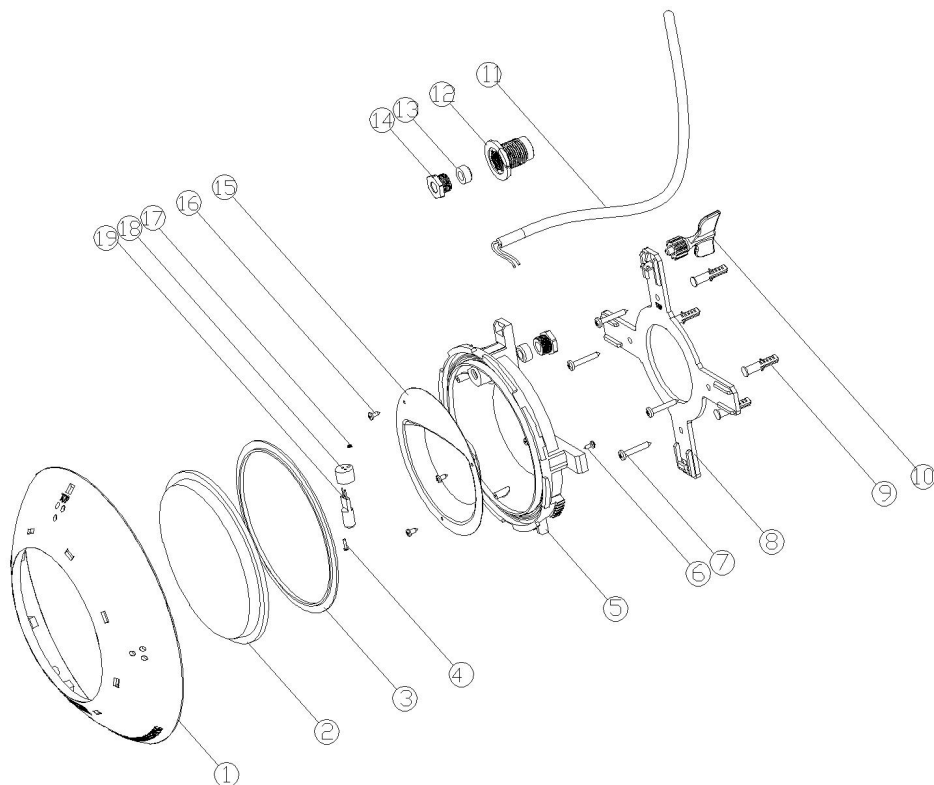
The floodlamp should only operate underwater while secured to the vertical walls of the pool. Never switch on the floodlamp if it is not underwater.

7. SAFETY WARNINGS:

- The persons who are in charge of assembly should have the required qualifications for this type of work.
- If the end cable of this light fitting is damaged, it should only be replaced by the manufacturer, its technical service or by a similarly qualified person, to avoid any danger.
- Avoid making contact with the electric voltage.
- Comply with the current standards regarding accident prevention.
- In this regard, the IEC 364-7-702 standards must be observed. **WIRING IN BUILDINGS.**

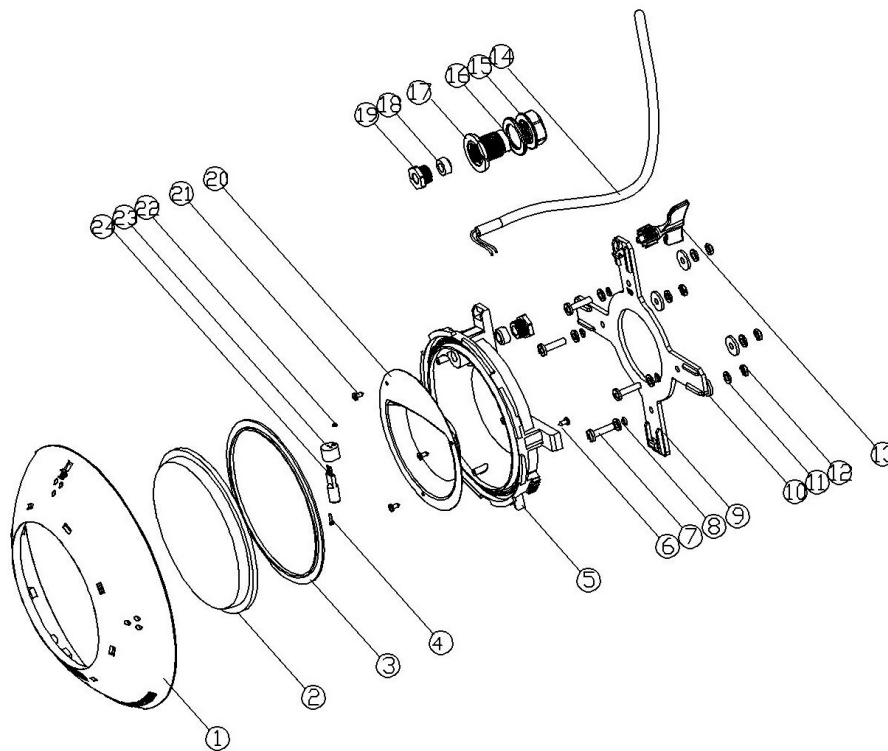
SPECIAL WIRING. SWIMMING POOLS.

- Any operation related to the maintenance or replacement of parts should be performed with the floodlamp disconnected from the electric power system.
- Do not handle with wet feet.
- The manufacturer is not responsible in any circumstances for assembly, installation or start-up of any electric components which have been inserted or handled at locations other than its own premises.



ENGLISH Halogen Concrete UWL

ID.	CODE	DESCRIPTION	Q.	ID.	CODE	DESCRIPTION	Q.
1	08020601R0001	Face plate ring	1	13	45843R0001	Cable gland gasket	2
2	45843R0002	Clear lens	1	14	45843R0014	Cable gland nut	2
3	45843R0011	Silicon gasket	1	15	45843R0009	Reflector	1
4	DIN7985 M2X8	Screw DIN 7985 A2 M-2x8	1	16	DIN7981 ST2.9X9.5	Screw DIN 7981 2.9x9.5	3
5	45843R0008	Rear protection screen	1	17	DIN934 M2	Nut DIN 934 A2 M-2	1
6	DIN7981 ST3.5X9.5	Screw DIN 7981 3.5x9.5	1	18	45843R0012	Lamp holder	1
7	ST4.8X38	Screw DIN 7981 A2 4.8x38	4	19	45843R0013	Halogen lamp 12V 75W	1
8	45843R0007	Mounting bracket	1				
9	8*40	Screw anchor S-6	4				
10	45843R0006	Key	1				
11	45843R0015	Electrical cable 2.5mx1.5	1				
12	45843R0003	Conduit connector	1				



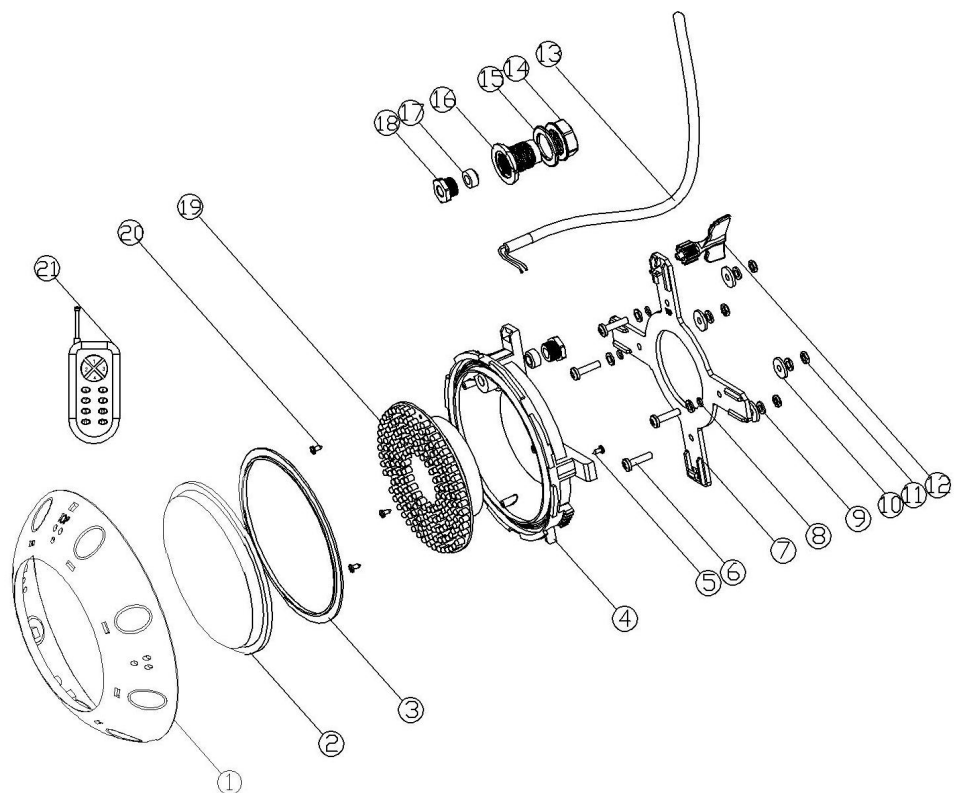
ENGLISH Halogen Prefabricated UWL

ID	CODE	DESCRIPTION	Q.	ID	CODE	DESCRIPTION	Q.
1	08020601R0001	Face plate ring	1	15	45843R0016	Wall conduit nut	1
2	45843R0002	Clear lens	1	16	45843R0005	Flat gasket	1
3	45843R0011	Silicon gasket	1	17	45843R0003	Conduit connector	1
4	DIN7985 M2X8	Screw DIN 7985 A2 M-2x8	1	18	45843R0001	Cable gland gasket	2
5	45843R0008	Rear protection screen	1	19	45843R0014	Cable gland nut	2
6	DIN7981 ST3.5X9.5	Screw DIN 7981 3.5x9.5	1	20	45843R0009	Reflector	1
7	DIN7985 M6X25	Screw DIN7985 M6X25	4	21	DIN7981 ST2.9X9.5	Screw DIN 7981 2.9x9.5	3
8	45843R0017	O ring	4	22	DIN934 M2	Nut DIN 934 A2 M-2	1
9	45843R0007	Mounting bracket	1	23	45843R0012	Lamp holder	1
10	45843R0018	Gasket rubber	4	24	45843R0013	Halogen lamp 12V 75W	1
11	DIN125 A6.4	Washer DIN125 A6.4	8				
12	DIN934 M6	Nut DIN934 M6	4				
13	45843R0006	Key	1				
14	45843R0015	Electrical cable 2.5mx1.5	1				



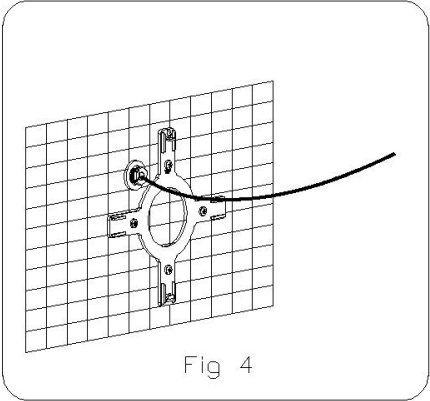
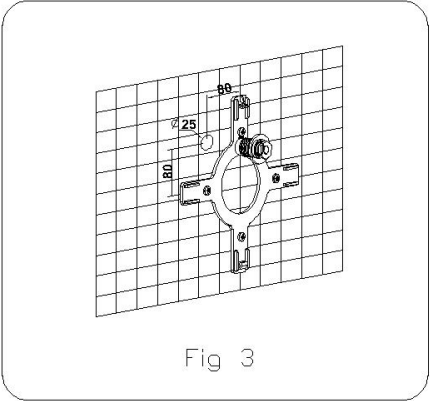
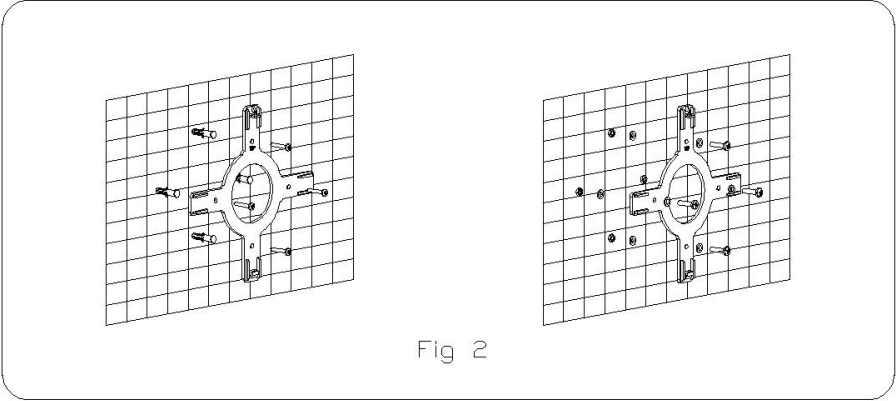
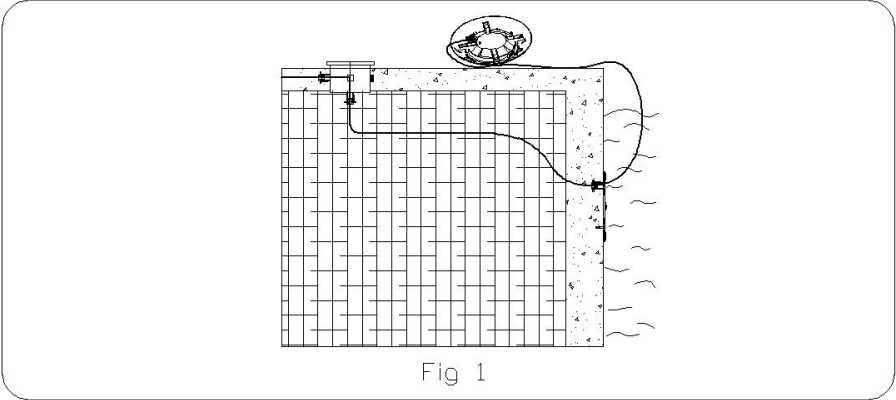
ENGLISH LED Concrete UWL WITH REMOTE CONTROLLER

ID.	CODE	DESCRIPTION	Q.	ID.	CODE	DESCRIPTION	Q.
1	08020601R0001	Face plate ring	1	11	45843R0003	Conduit connector	1
2	45843R0002	Clear lens	1	12	45843R0001	Cable gland gasket	2
3	45843R0011	Silicon gasket	1	13	45843R0014	Cable gland nut	2
4	45843R0008	Rear protection screen	1	14	08020603R0001	LED lamp 144 white	1
5	DIN7981 ST3.5X9.5	Screw DIN 7981 3.5x9.5	1	14	45845R0001	LED lamp 246 white	1
6	ST4.8X38	Screw DIN 7981 A2 4.8x38	4	14	08020604R0001	LED lamp 144 color	1
7	45843R0007	Mounting bracket	1	14	45846R0001	LED lamp 246 color	1
8	8°40	Screw anchor S-6	4	15	DIN7981 ST2.9X9.5	Screw DIN 7981 2.9x9.5	3
9	45843R0006	Key	1	16	08020607R0002	Remote controller	1
10	45843R0015	Electrical cable 2.5mx1.5	1				



ENGLISH LED Prefabricated UWL WITH REMOTE CONTROLLER

1	08020601R0001	Face plate ring	1	13	45843R0015	Electrical cable 2.5mx1.5	1
2	45843R0002	Clear lens	1	14	45843R0016	Wall conduit nut	1
3	45843R0011	Silicon gasket	1	15	45843R0005	Flat gasket	1
4	45843R0008	Rear protection screen	1	16	45843R0003	Conduit connector	1
5	DIN7981 ST3.5X9.5	Screw DIN 7981 3.5x9.5	1	17	45843R0001	Cable gland gasket	2
6	DIN7985 M6X25	Screw DIN7985 M6X25	4	18	45843R0014	Cable gland nut	2
7	45843R0007	Mounting bracket	1	19	08020603R0001	LED lamp 144 white	1
8	45843R0017	O-ring	4	19	45845R0001	LED lamp 246 white	1
9	DIN125 A6.4	Washer DIN125 A6.4	8	19	08020604R0001	LED lamp 144 color	1
10	45843R0018	Gasket rubber	4	19	45846R0001	LED lamp 246 color	1
11	DIN934 M6	Nut DIN934 M6	4	19	08020607R0001	LED lamp 246 color remote	1
12	45843R0006	Key	1	20	DIN7981 ST2.9X9.5	Screw DIN 7981 2.9x9.5	3
				21	08020607R0002	Remote controller	1



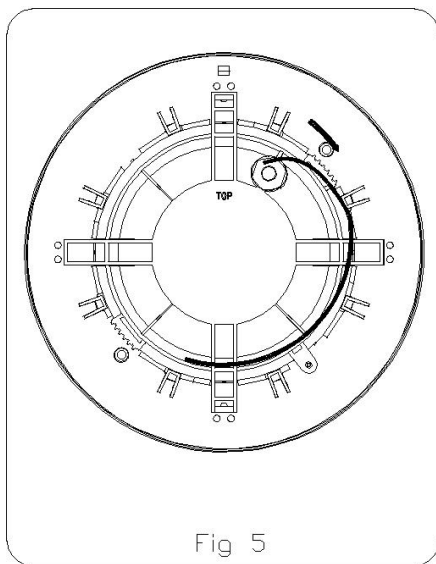


Fig 5

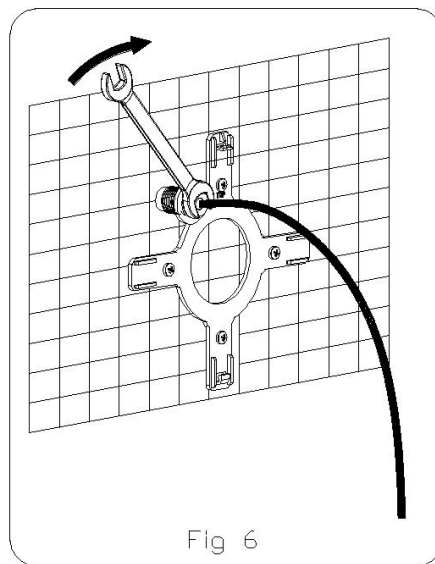


Fig 6

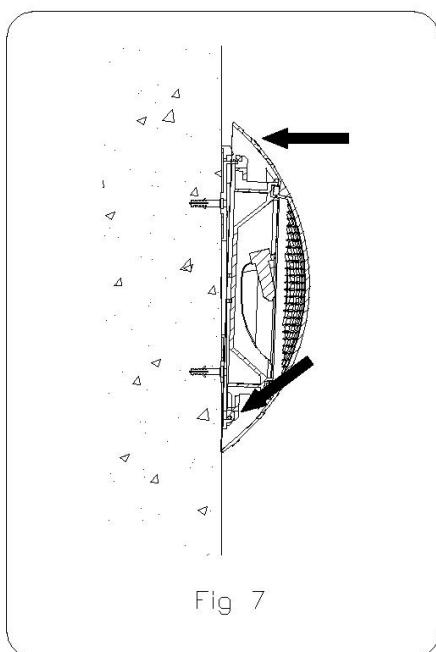


Fig 7

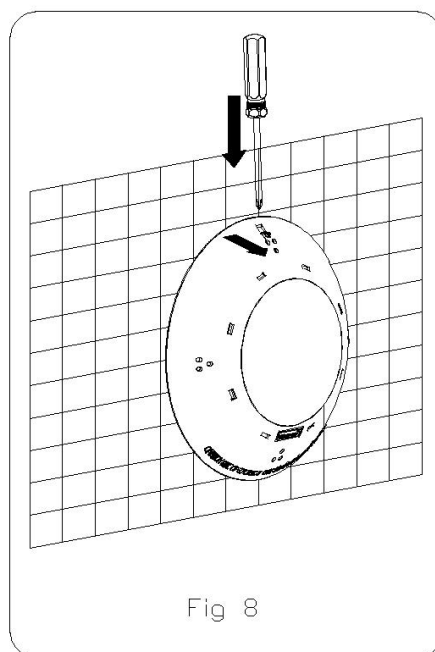
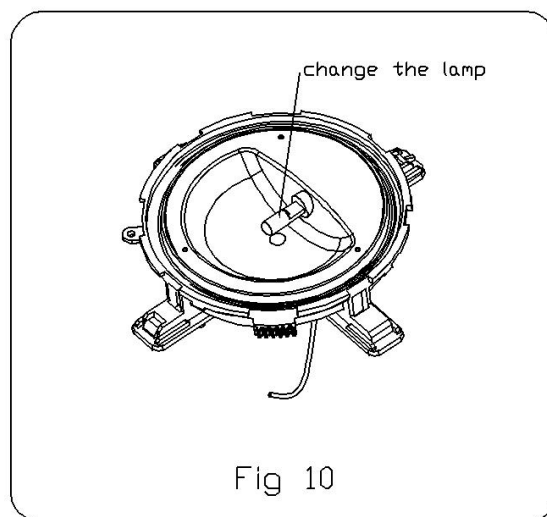
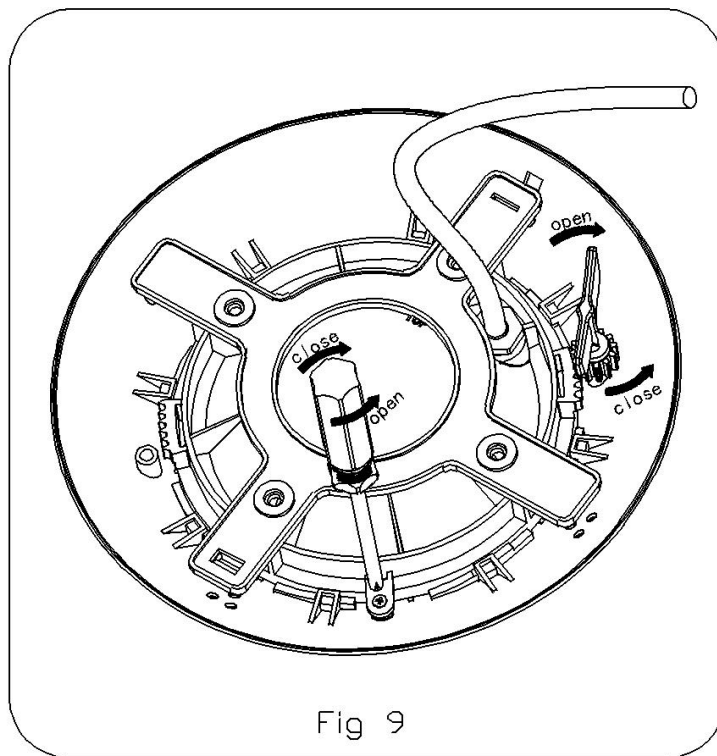



Fig 8



□ TECHNICAL CHARACTERISTICS

DESCRIPTION		STANDARD	
Rated voltage		12V	
Current suply		AC	
Power		Halogen 12V AC 75 W	
		LED 12V AC 21 W	
Protection		CLASE III IPX8	
<div></div> <div>TO BE USED ONLY WITH A SECURIY TRANSFORMER</div>			
THE UNDERWATER LIGHT NEVER TO BE SWITCHED ON IF IT IS NOT SUBMERGED			

□ We reserve to change all or part of the articles or contents of this document, without prior notice.